

Sample Name: Chemerin-9 (149-157)
 Cat No. : RP20248
 Lot No. : E0773319J
 Time Processed: 6:36:57 AM
 Month-Day-Year Processed :10/19/2019

Pump A : 0.065% trifluoroacetic in 100% water (v/v)
 Pump B : 0.05% trifluoroacetic in 100% acetonitrile (v/v)
 Total Flow:1 ml/min
 Wavelength:220 nm
 <<LC Time Program>>

Time	Module	Command	Value
0.01	Pumps	Solvent B Conc.	5
25.00	Pumps	Solvent B Conc.	65
25.01	Pumps	Solvent B Conc.	95
27.00	Pumps	Solvent B Conc.	95
27.01	Pumps	Solvent B Conc.	5
33.00	Pumps	Solvent B Conc.	5
33.00	Controller	Stop	

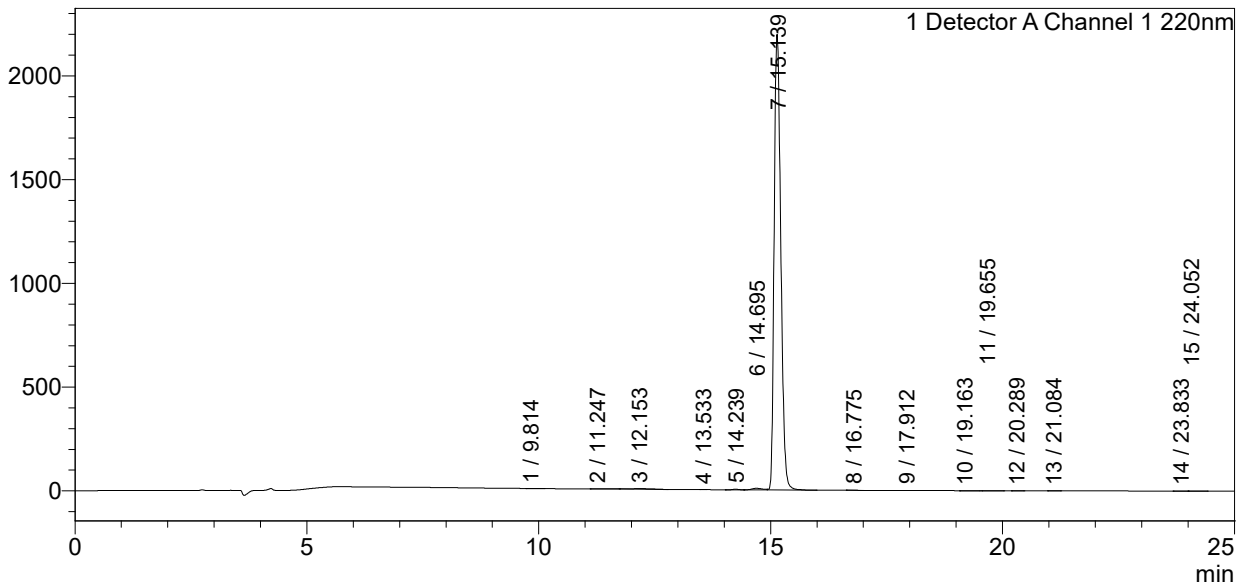
<<Column Performance>>

<Detector A>

Column : Alltima™ C18 4.6 x 250 mm
 Equipment:ZJ19010325

<Chromatogram>

mV



<Peak Table>

Detector A Channel 1 220nm

Peak#	Ret. Time	Area	Height	Area%
1	9.814	2205	223	0.010
2	11.247	3199	127	0.014
3	12.153	82999	2624	0.375
4	13.533	1191	307	0.005
5	14.239	23362	2834	0.106
6	14.695	119626	7573	0.541
7	15.139	21880623	2196805	98.873
8	16.775	3011	254	0.014
9	17.912	2778	346	0.013
10	19.163	2058	103	0.009
11	19.655	2109	96	0.010
12	20.289	1141	124	0.005
13	21.084	2345	361	0.011
14	23.833	1285	77	0.006

Peak#	Ret. Time	Area	Height	Area%
15	24.052	2053	134	0.009
Total		22129985	2211989	100.000