

Sample Name :Luteinizing Hormone Releasing Hormone (LH-RH), human
 Cat No. :RP11937
 Lot No. :E8752620K
 Time Processed :6:42:20 AM
 Month-Day-Year Processed :12/07/2020

Pump A : 0.065% trifluoroacetic in 100% water (v/v)
 Pump B : 0.05% trifluoroacetic in 100% acetonitrile (v/v)
 Total Flow:1 ml/min
 Wavelength:220 nm

<<LC Time Program>>

| Time | Module | Command | Value |
|-------|------------|---------|-------|
| 0.01 | Pumps | B.Conc | 5 |
| 25.00 | Pumps | B.Conc | 65 |
| 25.01 | Pumps | B.Conc | 95 |
| 27.00 | Pumps | B.Conc | 95 |
| 27.01 | Pumps | B.Conc | 5 |
| 35.00 | Pumps | B.Conc | 5 |
| 35.01 | Controller | Stop | |

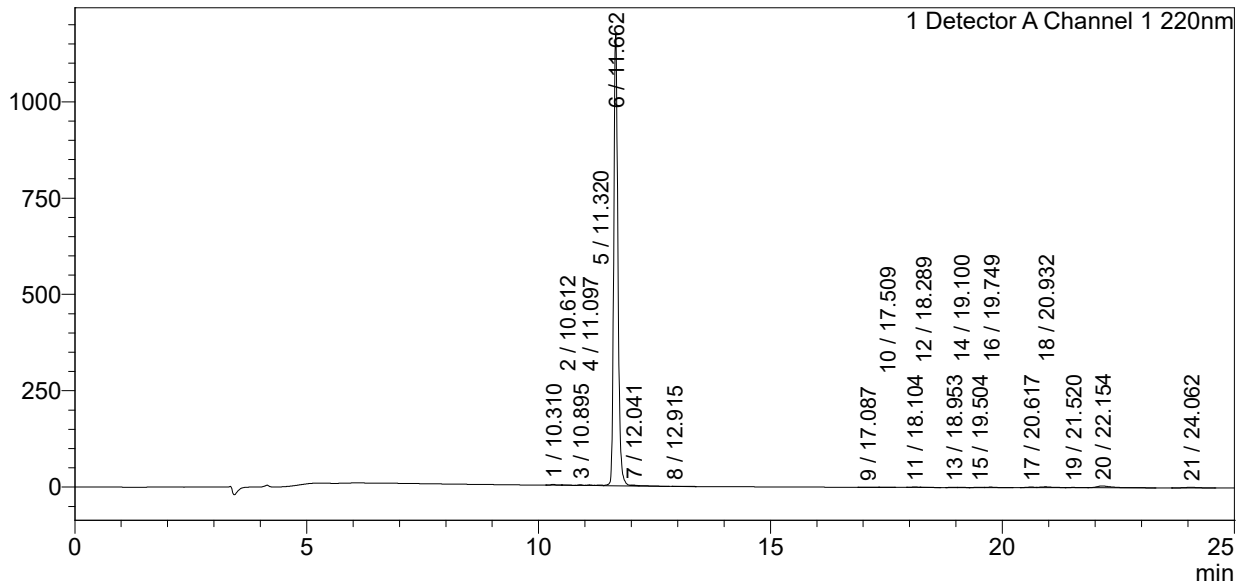
<<Column Performance>>

<Detector A>

Column :Inertsil ODS-3 4.6 x 250 mm
 Equipment: ZJ19010141

<Chromatogram>

mV



<Peak Table>

Detector A Channel 1 220nm

| Peak# | Ret. Time | Area | Height | Area% |
|-------|-----------|---------|---------|--------|
| 1 | 10.310 | 14739 | 2302 | 0.190 |
| 2 | 10.612 | 4856 | 550 | 0.063 |
| 3 | 10.895 | 9918 | 1690 | 0.128 |
| 4 | 11.097 | 8949 | 1431 | 0.116 |
| 5 | 11.320 | 11310 | 1154 | 0.146 |
| 6 | 11.662 | 7429090 | 1173414 | 95.938 |
| 7 | 12.041 | 4343 | 891 | 0.056 |
| 8 | 12.915 | 2146 | 103 | 0.028 |
| 9 | 17.087 | 2420 | 190 | 0.031 |
| 10 | 17.509 | 5274 | 575 | 0.068 |
| 11 | 18.104 | 12377 | 1479 | 0.160 |
| 12 | 18.289 | 6388 | 607 | 0.082 |
| 13 | 18.953 | 4335 | 462 | 0.056 |
| 14 | 19.100 | 3645 | 422 | 0.047 |

| Peak# | Ret. Time | Area | Height | Area% |
|-------|-----------|---------|---------|---------|
| 15 | 19.504 | 8529 | 793 | 0.110 |
| 16 | 19.749 | 14925 | 1188 | 0.193 |
| 17 | 20.617 | 18240 | 1364 | 0.236 |
| 18 | 20.932 | 41045 | 2133 | 0.530 |
| 19 | 21.520 | 7763 | 478 | 0.100 |
| 20 | 22.154 | 101428 | 4501 | 1.310 |
| 21 | 24.062 | 31889 | 1515 | 0.412 |
| Total | | 7743611 | 1197244 | 100.000 |