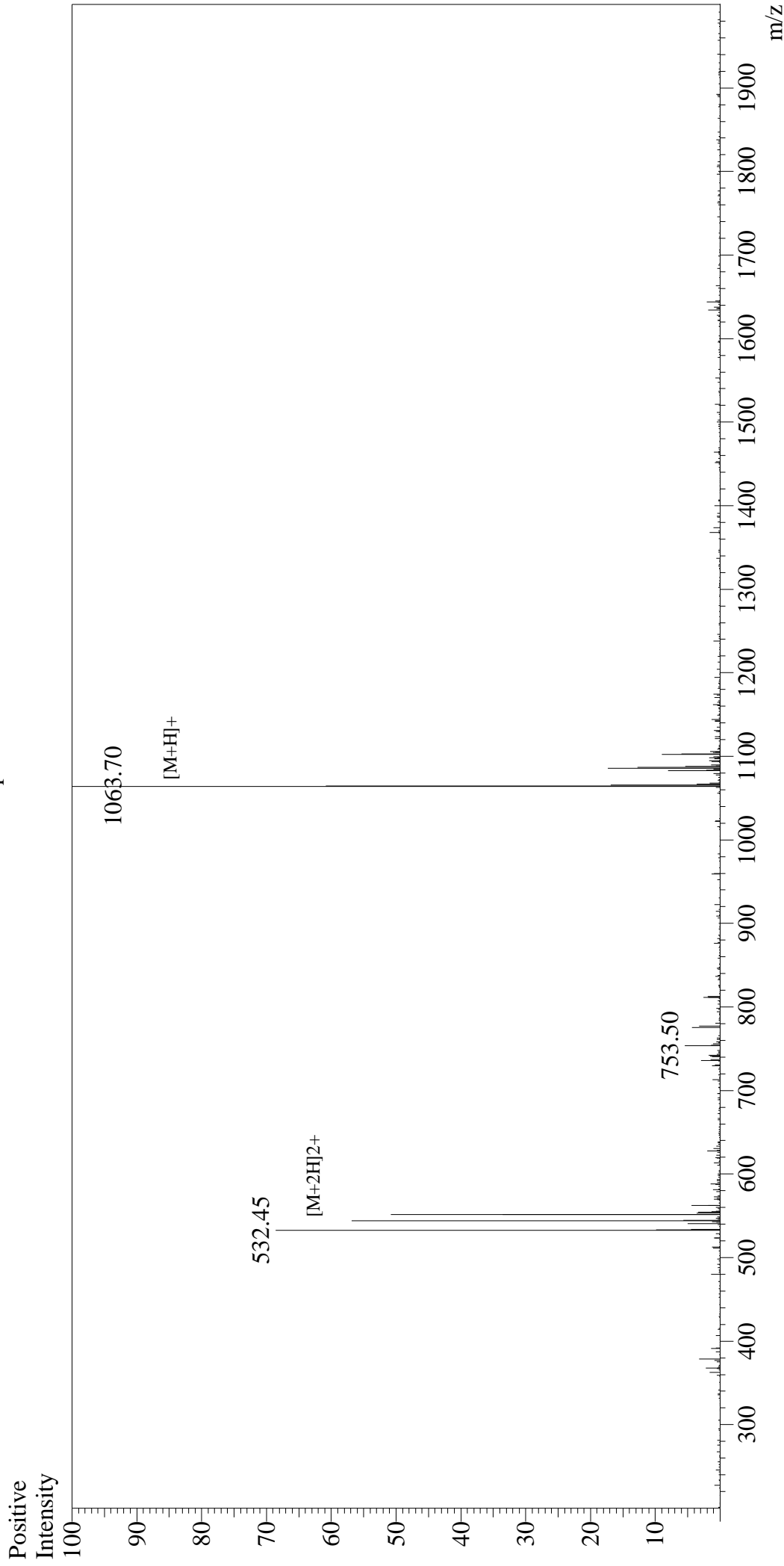


Mass Spectrum



Sample Information

User : Gary
Month-Day Processed : 10/29/17
Time Processed : 13:44:56
Injection Volume : 0.2
Sample Name : Chemerin-9 (149-157)
Cat No. : RP20248
Lot No. : PE3371710
Theoretical MW : 1063.17
Observed MW : 1062.70

Interface : ESI
Nebulizing Gas Flow : 1.5L/min
CDL Temp : 250°C
Block Temp : 200°C

Interface Bias : +4.5kV
Drying Gas Flow : 5 L/min
T.Flow : 0.2ml/min
B.conc : 50%H₂O/50%MeOH