

Sample Name : Chemerin-9 (149-157)
 Cat. No. : RP20248
 Lot. No. : PE3371710

Pump A : 0.065% trifluoroacetic in 100% water (v/v)
 Pump B : 0.05% trifluoroacetic in 100% acetonitrile (v/v)
 Total Flow:1 ml/min
 Wavelength:220 nm

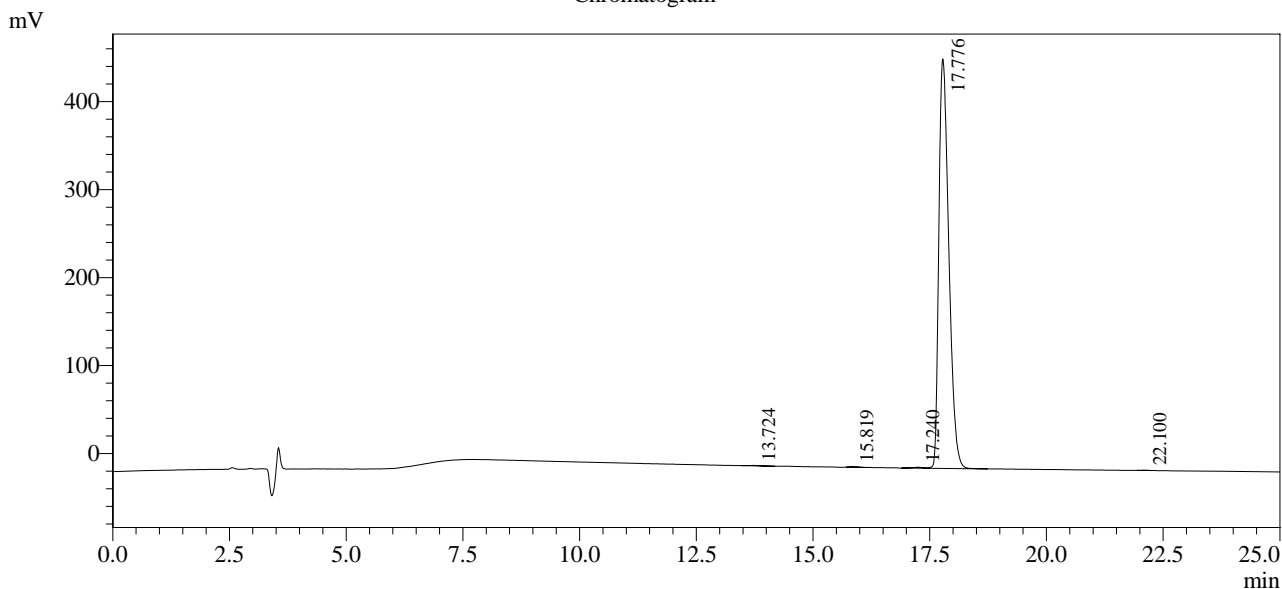
| Time | Unit | Command | Value | Comment |
|-------|------------|---------------|-------|---------|
| 0.01 | Pumps | Pump A B.Conc | 5 | |
| 25.00 | Pumps | Pump A B.Conc | 65 | |
| 25.01 | Pumps | Pump A B.Conc | 95 | |
| 31.00 | Pumps | Pump A B.Conc | 95 | |
| 31.01 | Pumps | Pump A B.Conc | 5 | |
| 40.00 | Pumps | Pump A B.Conc | 5 | |
| 40.01 | Controller | Stop | | |

<<Column Performance>>

<Detector A>

Column : Inertsil ODS-3 4.6 x 250 mm

Chromatogram



1 Det.A Ch1 / 220nm

Peak Table

Detector A Ch1 220nm

| Peak# | Ret. Time | Area | Height | Area % |
|-------|-----------|---------|--------|---------|
| 1 | 13.724 | 6904 | 415 | 0.099 |
| 2 | 15.819 | 8860 | 741 | 0.128 |
| 3 | 17.240 | 15811 | 1021 | 0.228 |
| 4 | 17.776 | 6909469 | 465570 | 99.507 |
| 5 | 22.100 | 2688 | 313 | 0.039 |
| Total | | 6943732 | 468061 | 100.000 |