

Sample Name: SV40 T-Ag-derived NLS peptide  
 Cat No. : RP20513  
 Lot No. : E4057019K  
 Time Processed: 11:47:12 PM  
 Month-Day-Year Processed :11/21/2019

Pump A : 0.065% trifluoroacetic in 100% water (v/v)  
 Pump B : 0.05% trifluoroacetic in 100% acetonitrile (v/v)  
 Total Flow:1 ml/min  
 Wavelength:220 nm  
 <<LC Time Program>>

Time	Module	Command	Value
0.01	Pumps	Solvent B Conc.	5
25.00	Pumps	Solvent B Conc.	65
25.01	Pumps	Solvent B Conc.	95
27.00	Pumps	Solvent B Conc.	95
27.01	Pumps	Solvent B Conc.	5
33.00	Pumps	Solvent B Conc.	5
33.00	Controller	Stop	

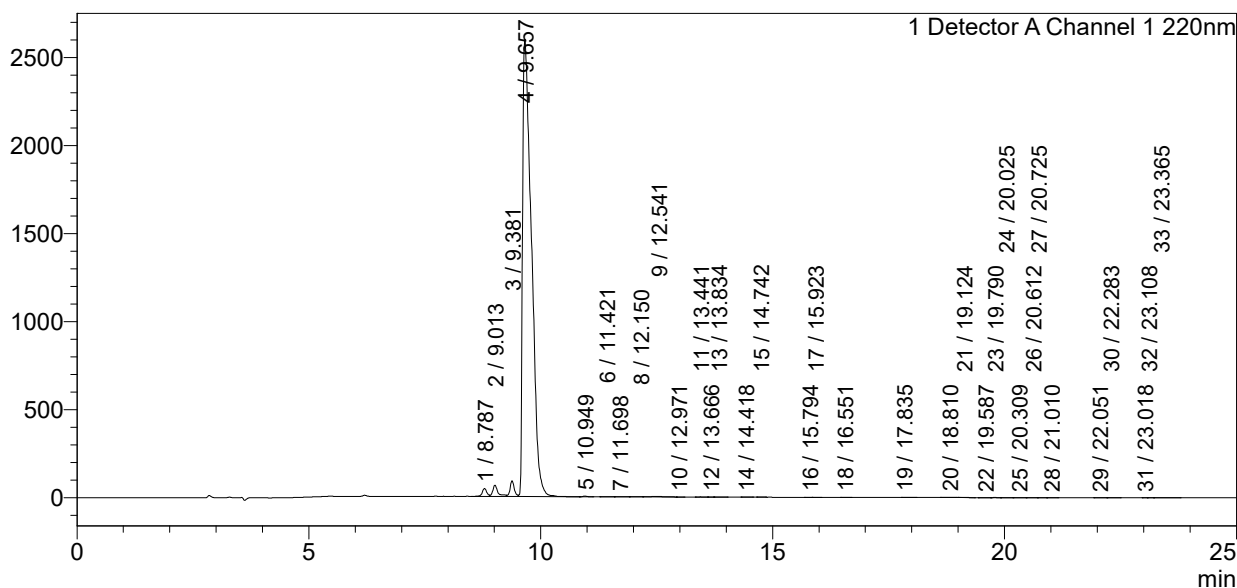
<<Column Performance>>

<Detector A>

Column : Alltima™ C18 4.6 x 250 mm  
 Equipment:ZJ19010325

### <Chromatogram>

mV



### <Peak Table>

Detector A Channel 1 220nm

Peak#	Ret. Time	Area	Height	Area%
1	8.787	308080	45590	0.853
2	9.013	507886	64317	1.406
3	9.381	568955	90000	1.575
4	9.657	34568226	2596913	95.714
5	10.949	25727	3963	0.071
6	11.421	2233	221	0.006
7	11.698	3120	454	0.009
8	12.150	7319	882	0.020
9	12.541	60502	2788	0.168
10	12.971	1734	346	0.005
11	13.441	6329	1256	0.018
12	13.666	1385	275	0.004
13	13.834	3647	440	0.010
14	14.418	2982	437	0.008

Peak#	Ret. Time	Area	Height	Area%
15	14.742	2059	385	0.006
16	15.794	1826	221	0.005
17	15.923	2577	378	0.007
18	16.551	2219	413	0.006
19	17.835	2097	223	0.006
20	18.810	2051	202	0.006
21	19.124	2078	185	0.006
22	19.587	2063	204	0.006
23	19.790	2471	360	0.007
24	20.025	1656	185	0.005
25	20.309	1151	153	0.003
26	20.612	1960	192	0.005
27	20.725	1037	203	0.003
28	21.010	1319	170	0.004
29	22.051	5597	619	0.015
30	22.283	3080	343	0.009
31	23.018	1052	182	0.003
32	23.108	1154	156	0.003
33	23.365	10761	963	0.030
Total		36116334	2813620	100.000