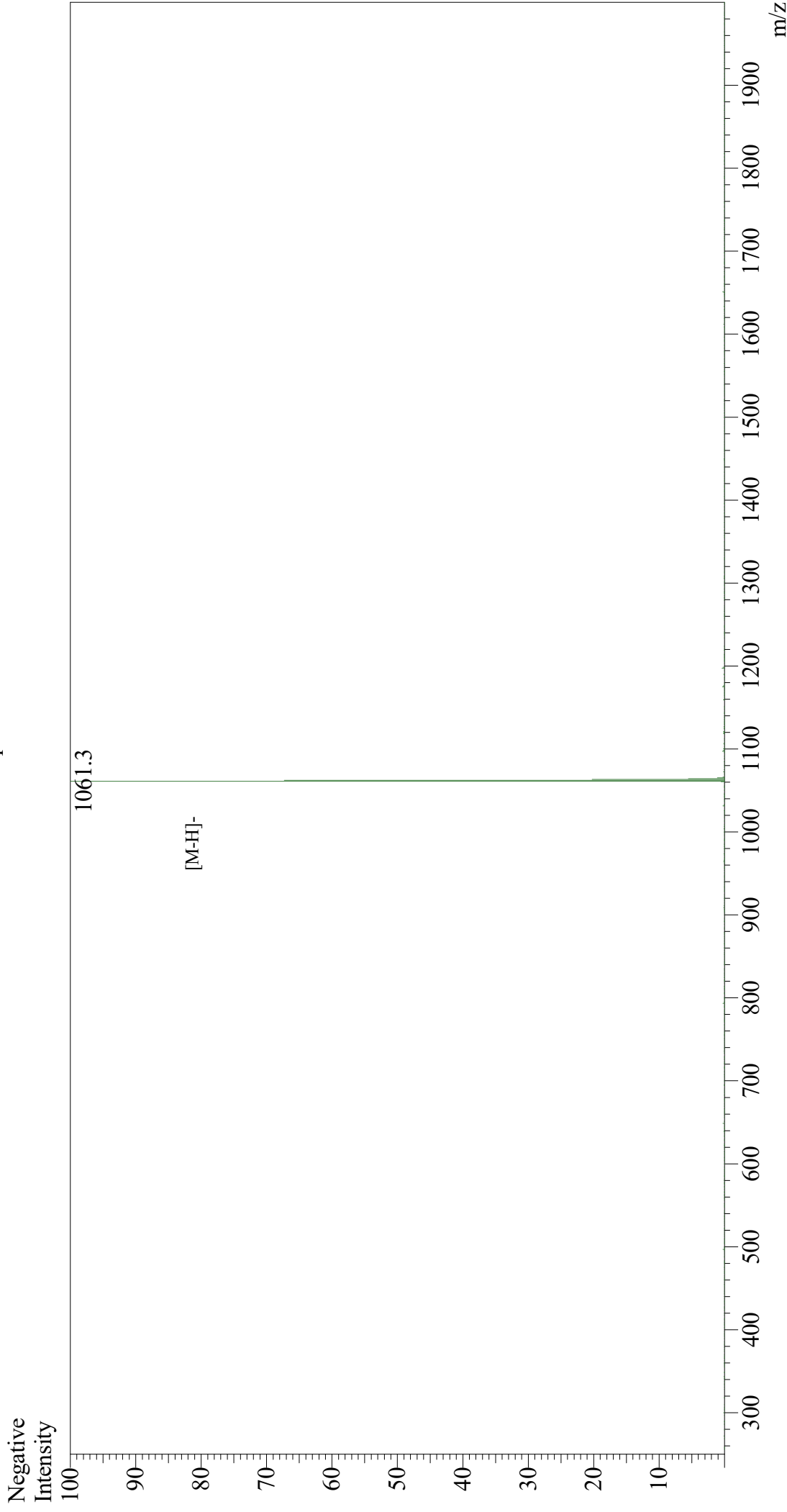


Mass Spectrum



Sample Information

User : Gary
Month-Day Processed : 03/05/19
Time Processed : 05:49:48 PM
Injection Volume : 0.2
Sample Name : Chemerin-9 (149-157)
Cat No. : RP20248
Lot No. : PE8671902
Theoretical MW : 1063.17
Observed MW : 1062.3

Interface : ESI
Nebulizing Gas Flow : 1.5L/min
CDL Temp : 250
Block Temp : 200

Equipment : GK11010007
Interface Bias : -3.5 kV
Drying Gas Flow : 5 L/min
T.Flow : 0.2 ml/min
B.conc : 50%H₂O/50%MeOH