

Sample Name : β -Amyloid (1-42), human
 Cat. No. : RP10017
 Lot. No. : PE0431705

Pump A : 0.065% trifluoroacetic in 100% water (v/v)
 Pump B : 0.05% trifluoroacetic in 100% acetonitrile (v/v)
 Total Flow: 1 ml/min
 Wavelength: 220 nm

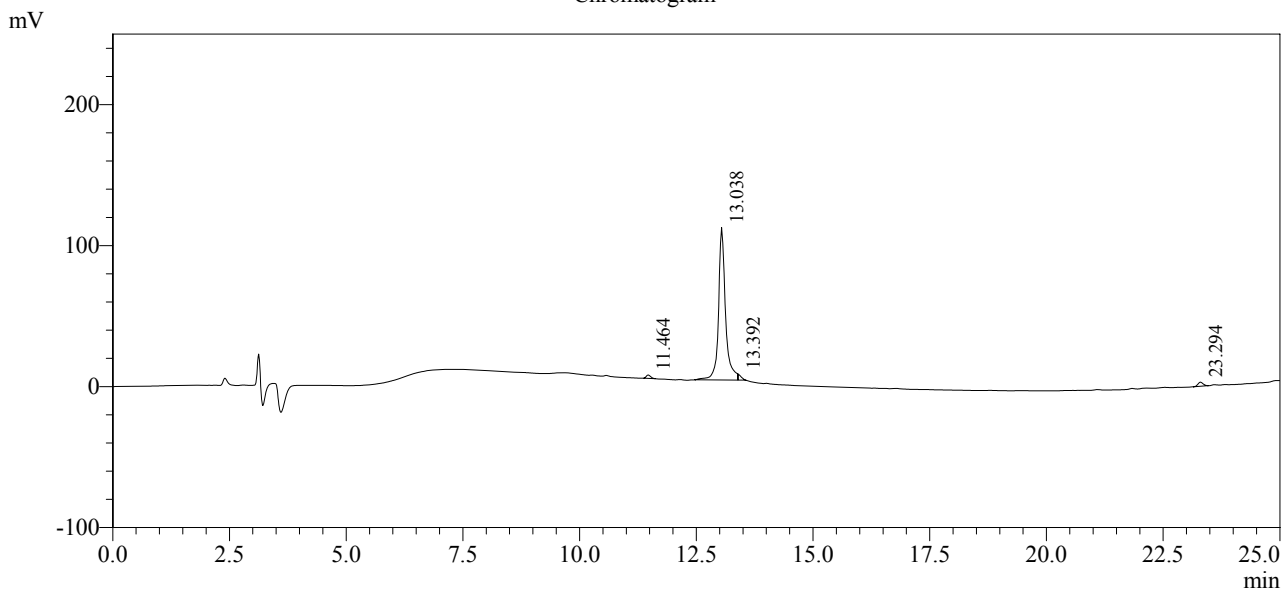
Time \AA	Unit	Command	Value	Comment
0.01 \AA	Pumps \AA	Pump B Conc.	10	
25.00 \AA	Pumps \AA	Pump B Conc.	100	
25.01 \AA	Pumps \AA	Pump B Conc.	95	
31.00 \AA	Pumps \AA	Pump B Conc.	95	
31.01 \AA	Pumps \AA	Pump B Conc.	10	
40.00 \AA	Pumps \AA	Pump B Conc.	10	
40.01 \AA	Controller \AA	Stop	\AA	

<<Column Performance>>

<Detector A>

Column : AlltimaTM C18 4.6 x 250 mm

Chromatogram



1 Det. A Ch1 / 220nm

Peak Table

Detector A Ch1 220nm

Peak#	Ret. Time	Area	Height	Area %
1	11.464	14839	2361	1.258
2	13.038	1124434	108084	95.308
3	13.392	18271	4334	1.549
4	23.294	22245	2893	1.885
Total		1179789	117672	100.000