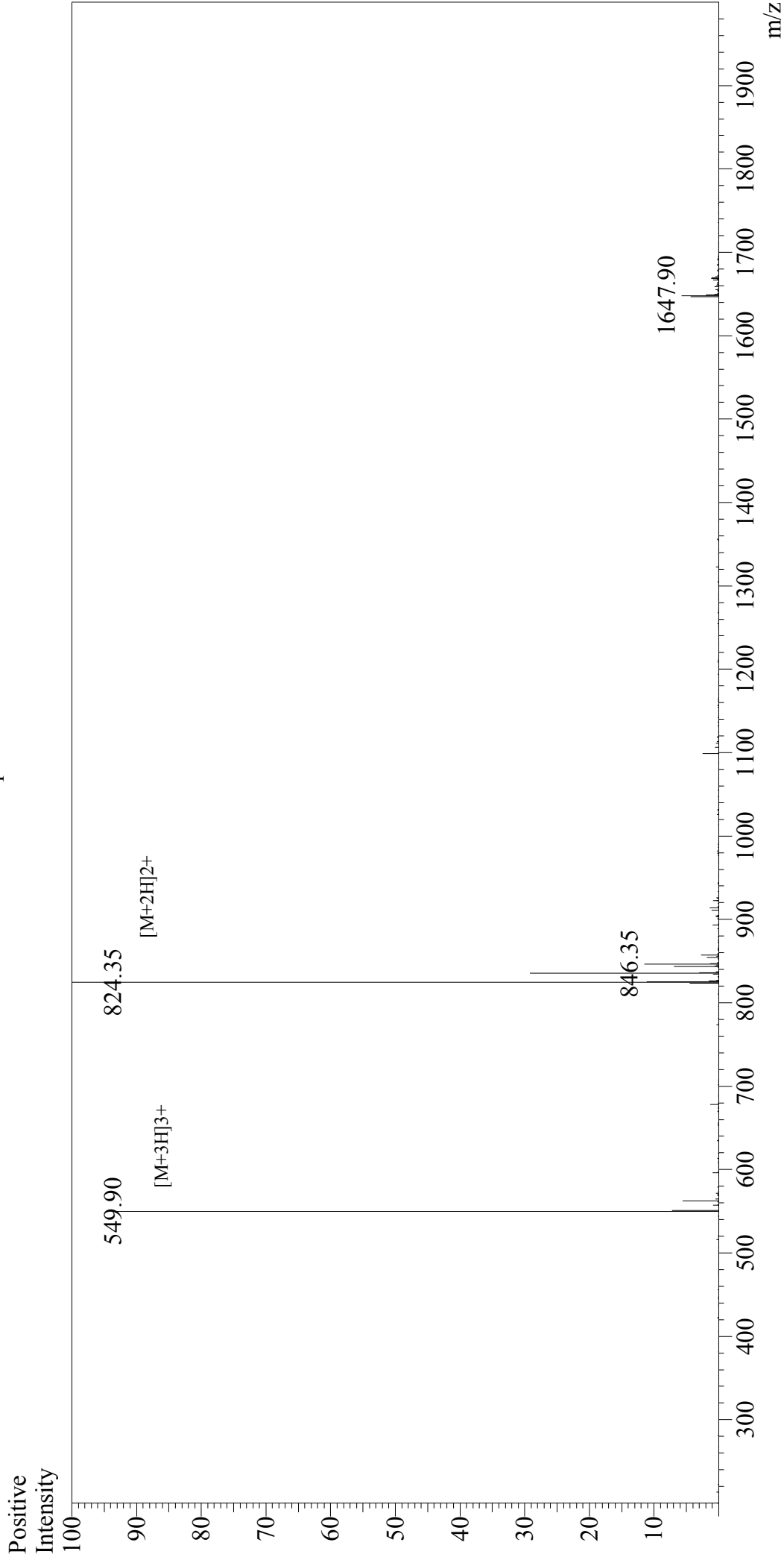


# Mass Spectrum



## Sample Information

User : Gary  
Month-Day Processed : 10/24/16  
Time Processed : 15:45:51  
Injection Volume : 0.2  
Sample Name : [Nle4, D-Phe7]- $\alpha$ -MSH, amide  
Cat No. : RP10658  
Lot No. : PE5261610  
Theoretical MW : 1647.00  
Observed MW : 1646.70

Interface : ESI  
Nebulizing Gas Flow : 1.5L/min  
CDL Temp : 250°C  
Block Temp : 200°C

Interface Bias : +4.5kV  
Drying Gas Flow : 5 L/min  
T.Flow : 0.2ml/min  
B.conc : 50%H2O/50%MeOH