

Sample Name : $\beta$ -Amyloid (1-42), human  
 Cat No. :RP10017 :  
 Lot No. PE1791904  
 Time Processed :10:54:38  
 Month-Day-Year Processed :05/31/2019

Pump A : 0.065% trifluoroacetic in 100% water (v/v)  
 Pump B : 0.05% trifluoroacetic in 100% acetonitrile (v/v)  
 Total Flow:1 ml/min  
 Wavelength:220 nm

<<LC Time Program>>

| Time  | Module     | Command         | Value |
|-------|------------|-----------------|-------|
| 0.01  | Pumps      | Solvent B Conc. | 5     |
| 25.00 | Pumps      | Solvent B Conc. | 65    |
| 25.01 | Pumps      | Solvent B Conc. | 95    |
| 27.00 | Pumps      | Solvent B Conc. | 95    |
| 27.01 | Pumps      | Solvent B Conc. | 5     |
| 35.00 | Pumps      | Solvent B Conc. | 5     |
| 35.01 | Controller | Stop            |       |

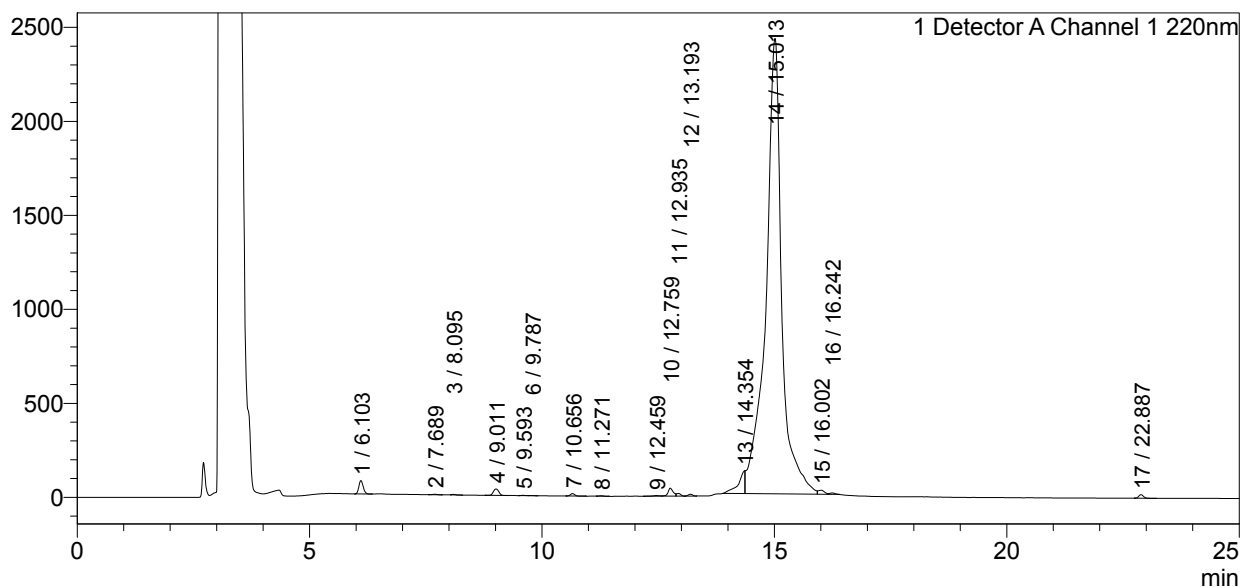
<<Column Performance>>

<Detector A>

Column : Inertsil ODS-3 4.6 x 250 mm  
 Equipment:ZJ19010141

<Chromatogram>

mV



<Peak Table>

Detector A Channel 1 220nm

| Peak# | Ret. Time | Area     | Height  | Area%  |
|-------|-----------|----------|---------|--------|
| 1     | 6.103     | 464013   | 71236   | 0.769  |
| 2     | 7.689     | 16292    | 2766    | 0.027  |
| 3     | 8.095     | 11834    | 2696    | 0.020  |
| 4     | 9.011     | 281323   | 34244   | 0.466  |
| 5     | 9.593     | 9365     | 1618    | 0.016  |
| 6     | 9.787     | 5152     | 1034    | 0.009  |
| 7     | 10.656    | 81150    | 12740   | 0.134  |
| 8     | 11.271    | 14759    | 2379    | 0.024  |
| 9     | 12.459    | 34927    | 3470    | 0.058  |
| 10    | 12.759    | 323981   | 42590   | 0.537  |
| 11    | 12.935    | 86321    | 14124   | 0.143  |
| 12    | 13.193    | 64720    | 9644    | 0.107  |
| 13    | 14.354    | 1211355  | 120004  | 2.008  |
| 14    | 15.013    | 57354529 | 2421676 | 95.055 |
| 15    | 16.002    | 196753   | 21139   | 0.326  |

| Peak# | Ret. Time | Area     | Height  | Area%   |
|-------|-----------|----------|---------|---------|
| 16    | 16.242    | 53810    | 7138    | 0.089   |
| 17    | 22.887    | 127865   | 18717   | 0.212   |
| Total |           | 60338147 | 2787214 | 100.000 |