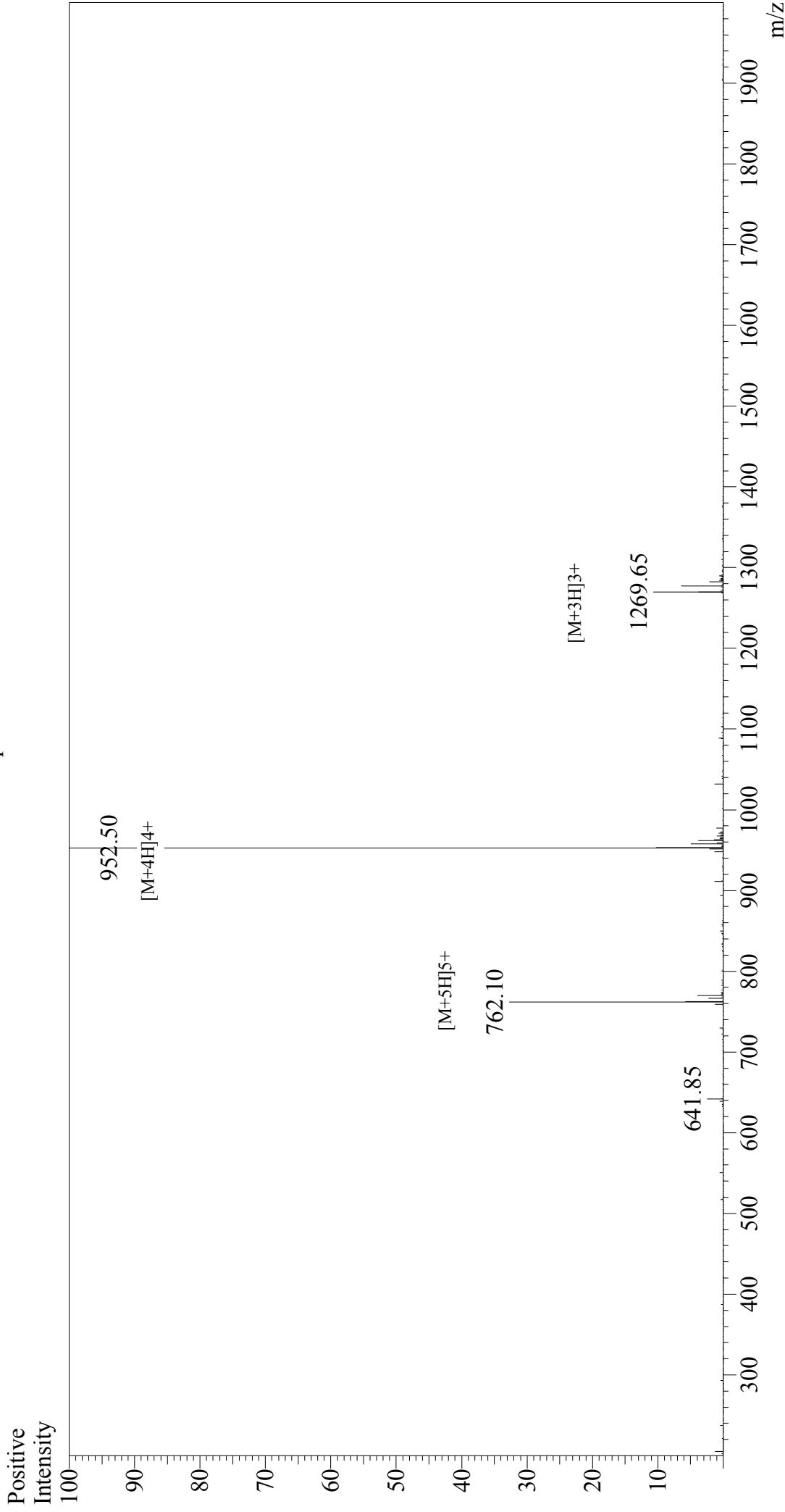


Mass Spectrum



Sample Information

Acquired by : Gary
Month-Day Processed : 08/28/17
Time Processed : 20:31:50
Injection Volume : 0.2
Sample Name : Calcitonin Gene Related Peptide (CGRP), rat
Cat No. : RPI1095
Lot No. : PE4291708
Theoretical MW : 3806.25
Observed MW : 3806.00

Interface : ESI
Nebulizing Gas Flow : 1.5L/min
CDL Temp : 250°C
Block Temp : 200°C

Interface Bias : +4.5 kV
Drying Gas Flow : 5 L/min
T.Flow : 0.2 ml/min
B.conc : 50%H2O/50%MeOH