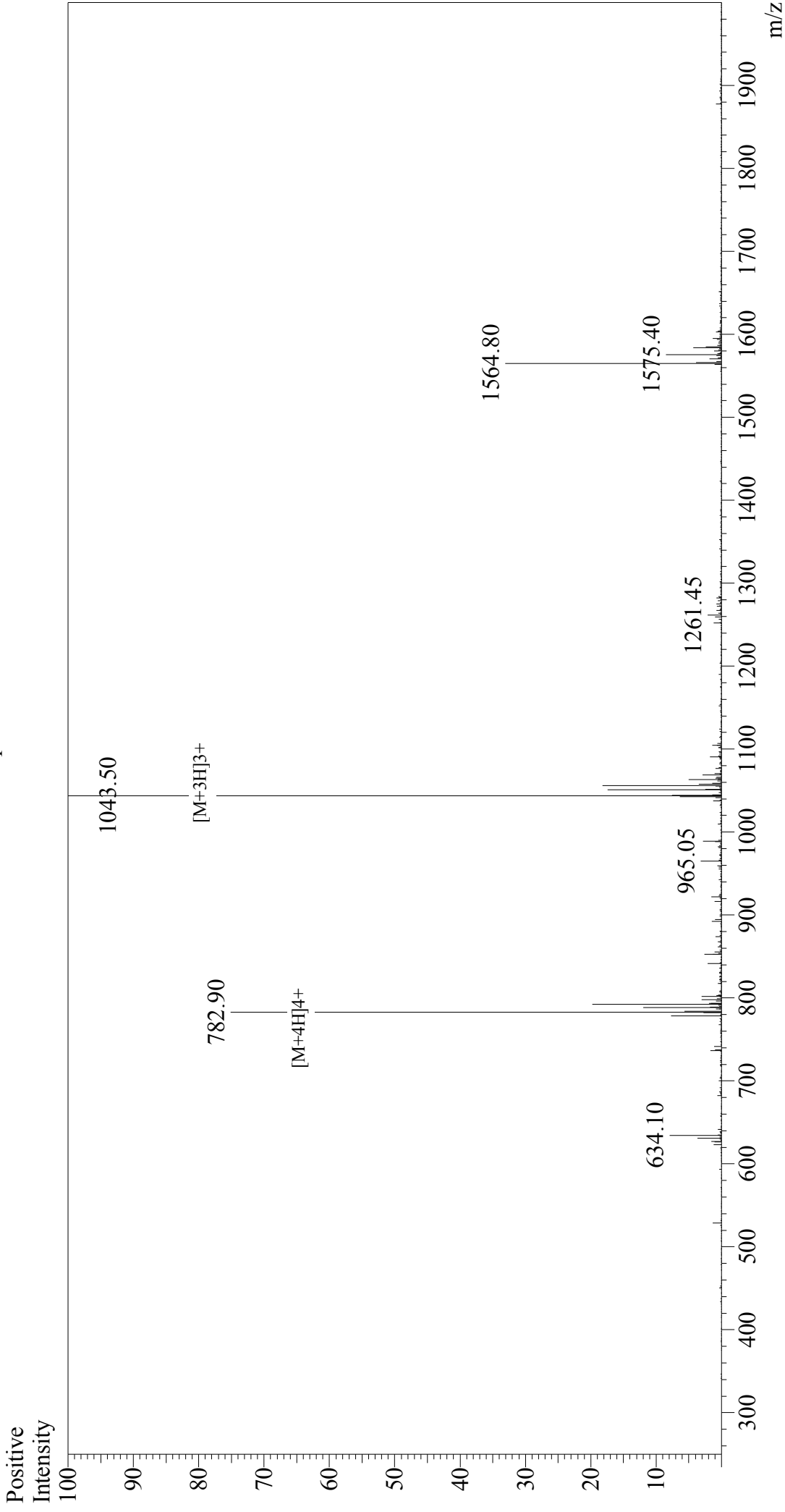


Mass Spectrum



Sample Information

Acquired by : Gary
 Month-Day Processed : 11/20/17
 Time Processed : 14:15:57
 Injection Volume : 0.2
 Sample Name : Calcitonin Gene Related Peptide (CGRP) (8-37), rat
 Cat. No. : RP11090
 Lot. No. : PE7031710
 Theoretical MW : 3127.60
 Observed MW : 3127.50

Interface : ESI
 Nebulizing Gas Flow : 1.5L/min
 CDL Temp : 250°C
 Block Temp : 200°C

Interface Bias : +4.5 kV
 Drying Gas Flow : 5 L/min
 T.Flow : 0.2 ml/min
 B.conc : 50% H₂O/50% MeOH