

Sample Name : hgp100(25-33)
 Cat. No. : RP20344
 Lot. No. : PE8941703

Pump A : 0.065% trifluoroacetic in 100% water (v/v)
 Pump B : 0.05% trifluoroacetic in 100% acetonitrile (v/v)
 Total Flow:1 ml/min
 Wavelength:220 nm

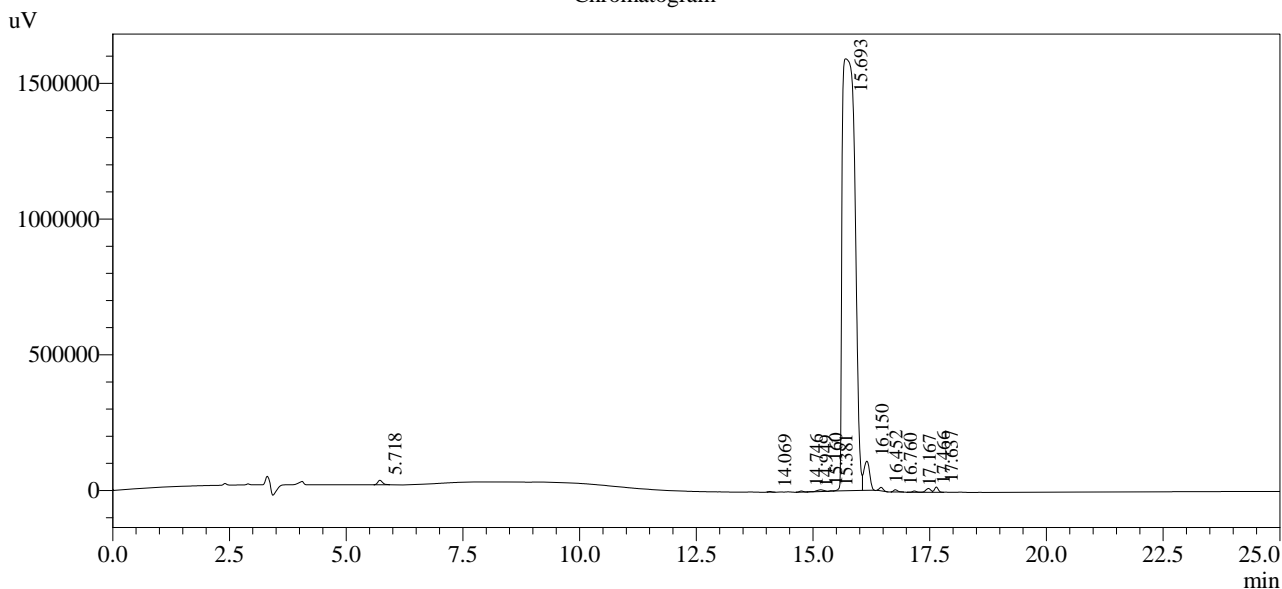
| Time | Unit | Command | Value | Comment |
|-------|------------|---------------|-------|---------|
| 0.01 | Pumps | Pump A B.Conc | 5 | |
| 25.00 | Pumps | Pump A B.Conc | 65 | |
| 25.01 | Pumps | Pump A B.Conc | 95 | |
| 31.00 | Pumps | Pump A B.Conc | 95 | |
| 31.01 | Pumps | Pump A B.Conc | 5 | |
| 40.00 | Pumps | Pump A B.Conc | 5 | |
| 40.01 | Controller | Stop | | |

<<Column Performance>>

<Detector A>

Column : Alltima™ C18 4.6 x 250 mm

Chromatogram



1 Det.A Ch1 / 220nm

Peak Table

Detector A Ch1 220nm

| Peak# | Ret. Time | Area | Height | Area % |
|-------|-----------|----------|---------|---------|
| 1 | 5.718 | 116627 | 16608 | 0.369 |
| 2 | 14.069 | 12056 | 2557 | 0.038 |
| 3 | 14.746 | 23870 | 3959 | 0.076 |
| 4 | 14.949 | 6092 | 1220 | 0.019 |
| 5 | 15.160 | 69048 | 6663 | 0.218 |
| 6 | 15.381 | 5436 | 1448 | 0.017 |
| 7 | 15.693 | 30096157 | 1591183 | 95.192 |
| 8 | 16.150 | 922914 | 107503 | 2.919 |
| 9 | 16.452 | 76172 | 13066 | 0.241 |
| 10 | 16.760 | 50832 | 8266 | 0.161 |
| 11 | 17.167 | 27454 | 4608 | 0.087 |
| 12 | 17.466 | 102142 | 13876 | 0.323 |
| 13 | 17.637 | 107565 | 19360 | 0.340 |
| Total | | 31616367 | 1790317 | 100.000 |