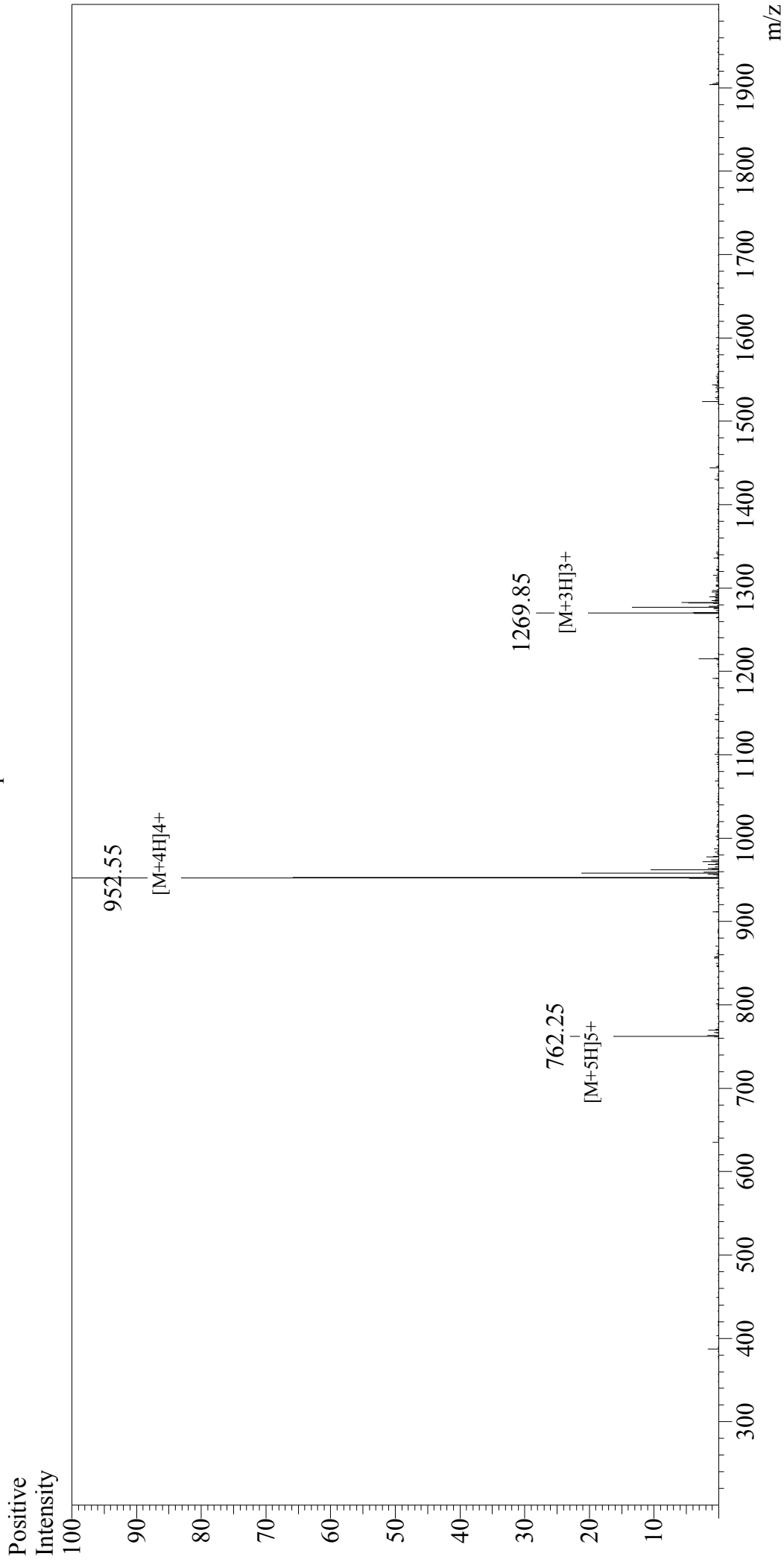


Mass Spectrum



Sample Information

User : Gary
Month-Day Processed : 12/21/17
Time Processed : 13:52:36
Injection Volume : 0.2
Sample Name : CGRP_rat
Cat No. : RPI1095
Lot No. : PE8381712
Theoretical MW : 3806.25
Observed MW : 3806.20

Interface : ESI
Nebulizing Gas Flow : 1.5L/min
CDL Temp : 250°C
Block Temp : 200°C

Interface Bias : +4.5kV
Drying Gas Flow : 5 L/min
T.Flow : 0.2ml/min
B.conc : 50%H2O/50%MeOH