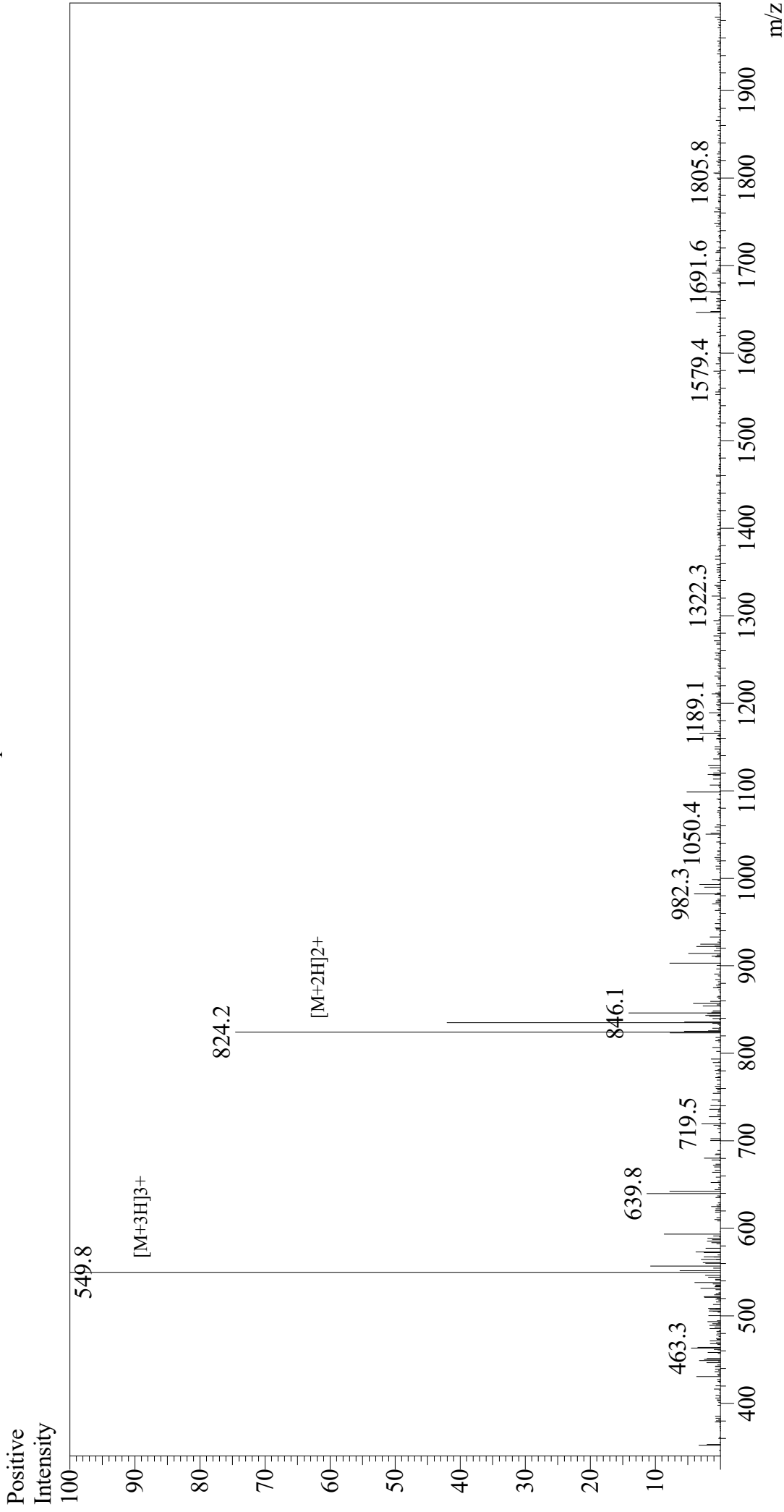


Mass Spectrum



Sample Information	Equipment	: GK11010007
Month-Day Processed :	Interface Bias	: +4.5 kV
Time Processed :	Drying Gas Flow	: 5 L/min
Injection Volume :	T.Flow	: 0.2 ml/min
Sample Name :	B.conc	: 50% H ₂ O/50% MeOH
Cat No. :	Interface	: ESI
Lot No. :	Nebulizing Gas Flow	: 1.5 L/min
Theoretical MW :	CDL Temp	: 250
Observed MW :	Block Temp	: 200

11/28/20	[Nle4, D-Phe7]- α -MSH, amide
8:28:45 PM	RP10658
0.3	E5925220K
	1647.00
	1646.4