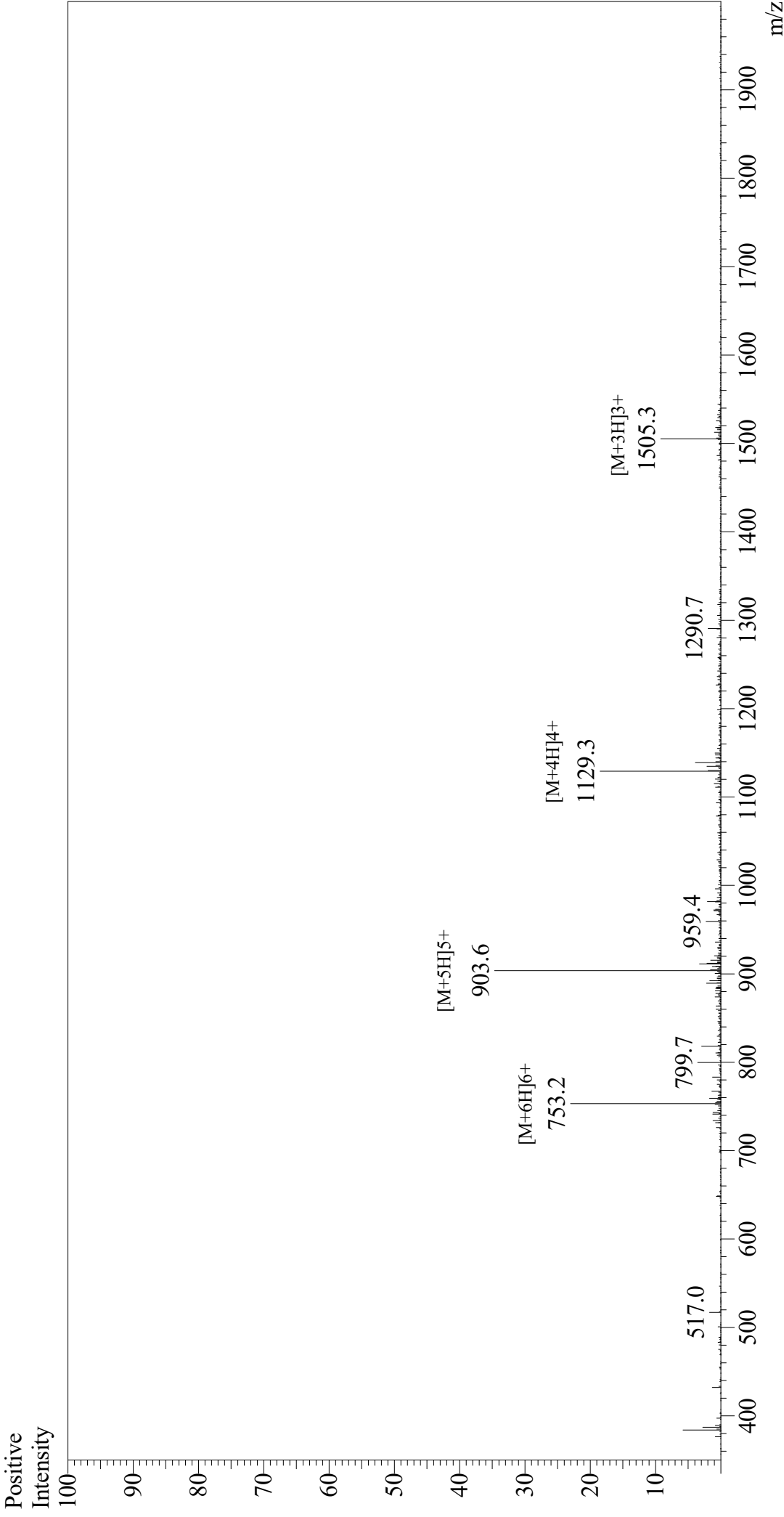


Mass Spectrum



Sample Information		Equipment	: GK11010007
Month-Day Processed :	04/06/21	Interface Bias	: +4.5 kV
Time Processed :	22:17:35	Drying Gas Flow	: 5 L/min
Injection Volume :	0.4	T.Flow	: 0.2 ml/min
Sample Name :	β -Amyloid (1-42), human	B.conc	: 50% H ₂ O/50% MeOH
Cat No. :	RP10017		
Lot No. :	E2021021C		
Theoretical MW :	4514.10		
Observed MW :	4513.0		

Interface	: ESI
Nebulizing Gas Flow	: 1.5 L/min
CDL Temp	: 250
Block Temp	: 200