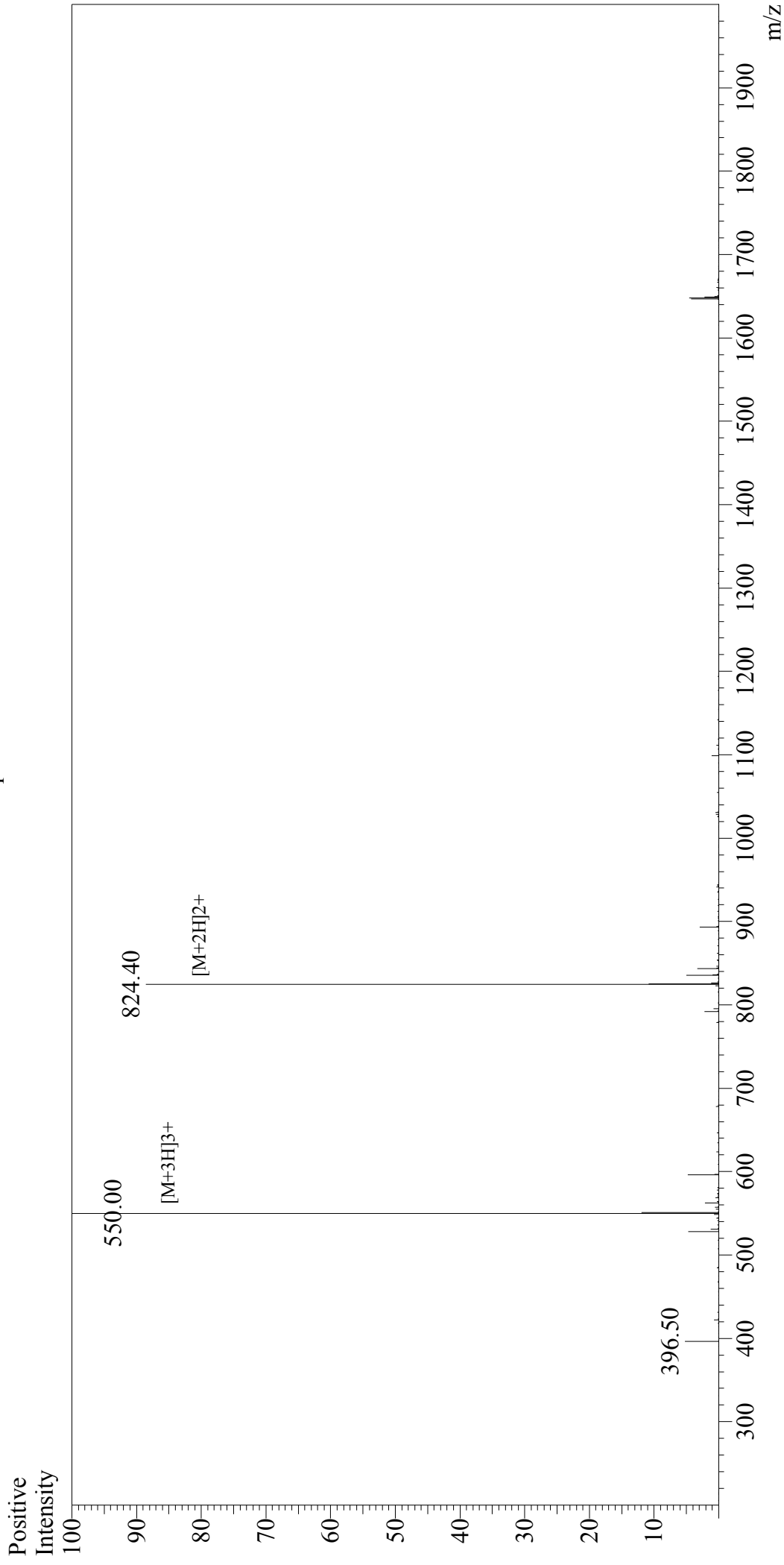


Mass Spectrum



Sample Information

User : Gary
Month-Day Processed : 09/13/17
Time Processed : 21:28:34
Injection Volume : 0.2
Sample Name : [Nle4, D-Phe7]- α -MSH, amide
Cat No. : RP10658-1
Lot No. : PE6651709
Theoretical MW : 1647.00
Observed MW : 1647.00

Interface : ESI
Nebulizing Gas Flow : 1.5L/min
CDL Temp : 250°C
Block Temp : 200°C

Interface Bias : +4.5kV
Drying Gas Flow : 5 L/min
T.Flow : 0.2ml/min
B.conc : 50%H2O/50%MeOH