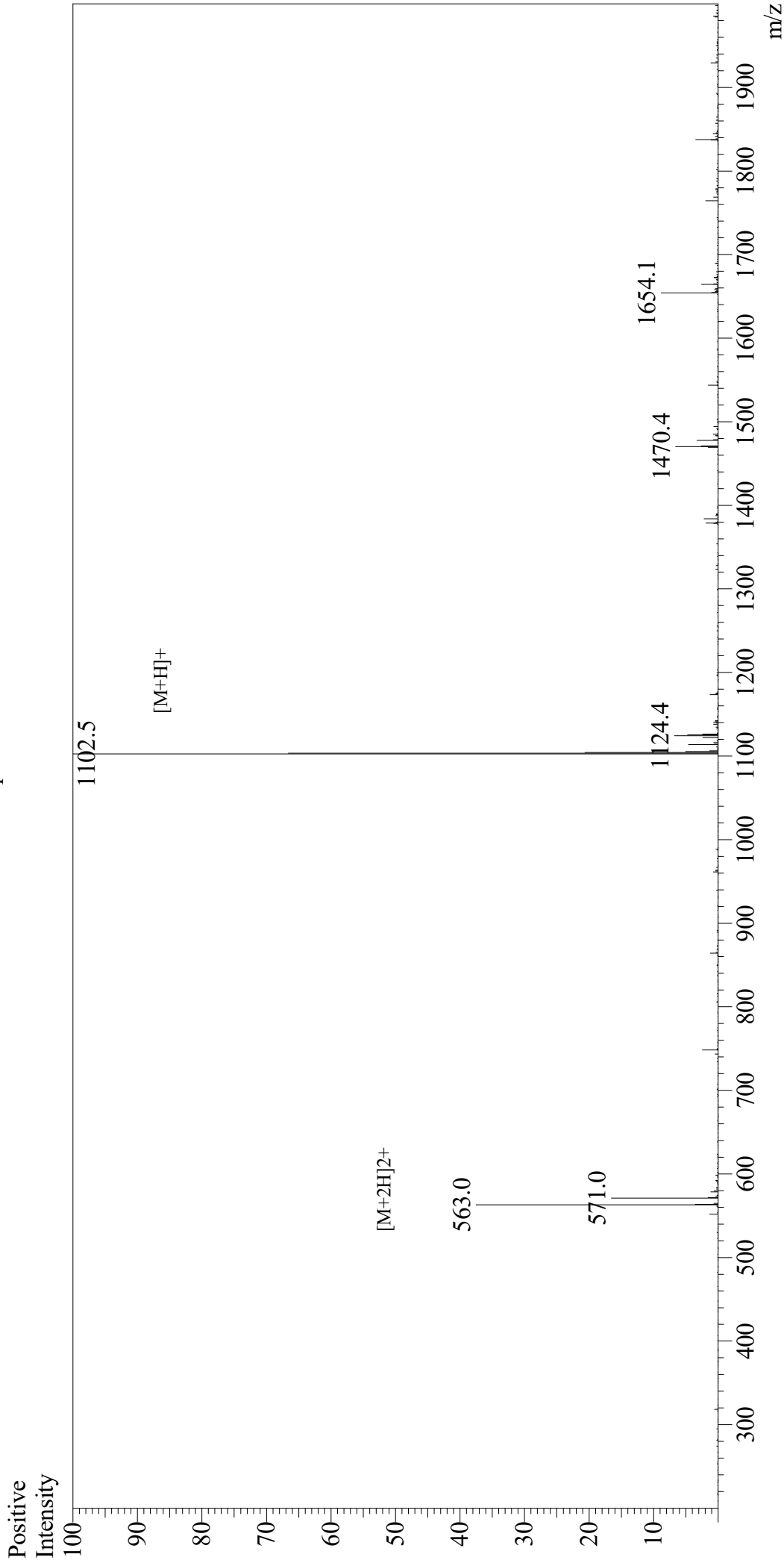


Mass Spectrum



Sample Information

User : Gary
Month-Day Processed : 01/17/19
Time Processed : 08:13:51 PM
Injection Volume : 0.2
Sample Name : HA Peptide
Cat No. : RP11735
Lot No. : PE8861901
Theoretical MW : 1102.15
Observed MW : 1101.5

Interface : ESI
Nebulizing Gas Flow : 1.5L/min
CDL Temp : 250
Block Temp : 200

Equipment : GK11010007
Interface Bias : +4.5kV
Drying Gas Flow : 5 L/min
T.Flow : 0.2ml/min
B.conc : 50%H2O/50%MeOH