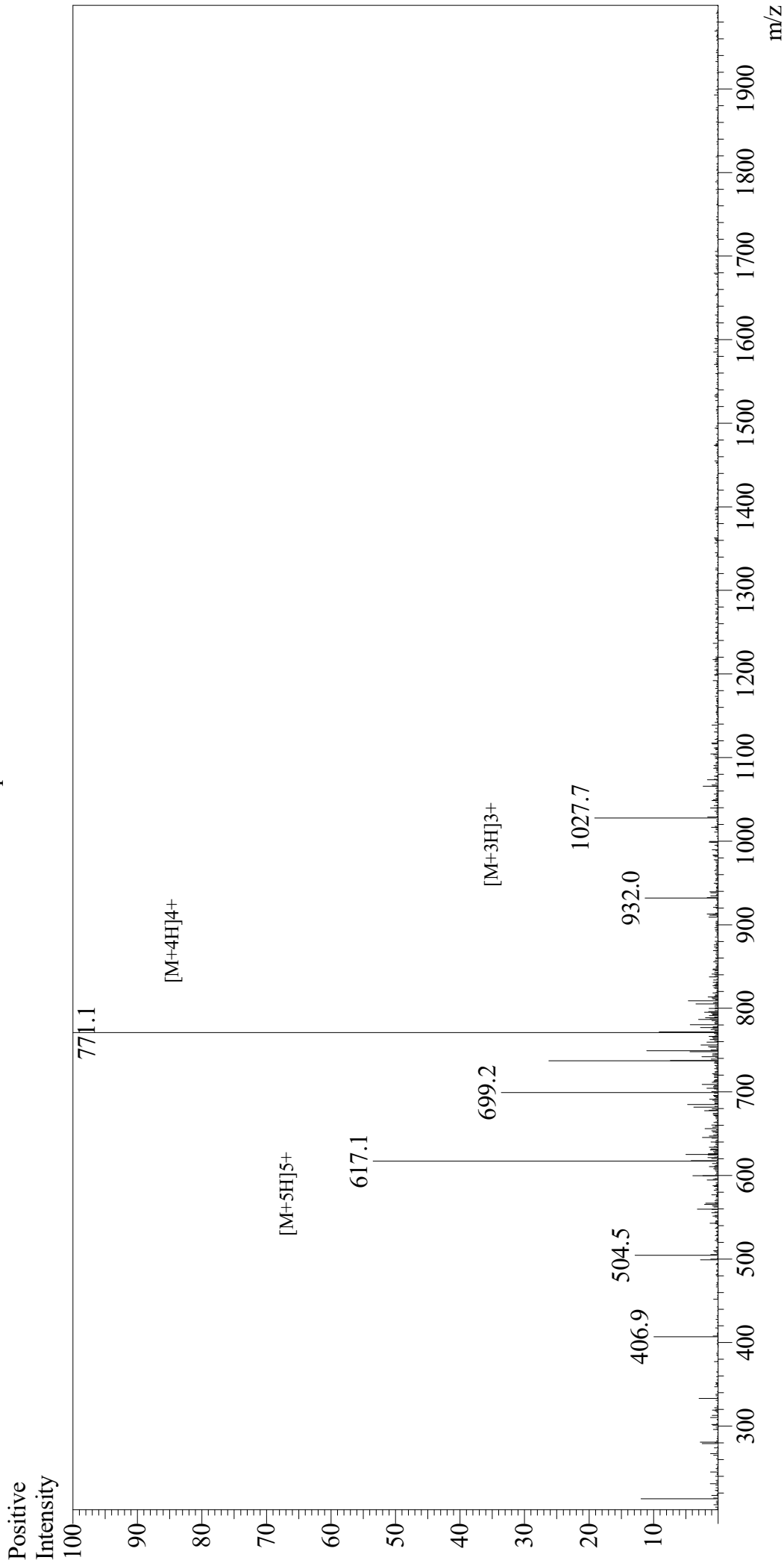


Mass Spectrum



Sample Information

User : Gary
Month-Day Processed : 01/09/19
Time Processed : 09:22:32 PM
Injection Volume : 0.2
Sample Name : ANP (1-28), human, porcine
Cat No. : RP11927
Lot No. : PE5901812
Theoretical MW : 3080.50
Observed MW : 3080.4

Interface

Interface : ESI
Nebulizing Gas Flow : 1.5L/min
CDL Temp : 250
Block Temp : 200

Equipment

Equipment : GK11010007
Interface Bias : +4.5kV
Drying Gas Flow : 5 L/min
T.Flow : 0.2ml/min
B.conc : 50%H₂O/50%MeOH