

Sample Name:C-Peptide (3-33), human  
 Cat No.: RP11116  
 Lot No.: E8607420A  
 Time Processed :15:12:22  
 Month-Day-Year Processed :01/09/2020

Pump A : 0.065% trifluoroacetic in 100% water (v/v)  
 Pump B : 0.05% trifluoroacetic in 100% acetonitrile (v/v)  
 Total Flow:1 ml/min  
 Wavelength:220 nm

<<LC Time Program>>

| Time  | Module     | Command       | Value |
|-------|------------|---------------|-------|
| 0.01  | Pumps      | Pump A B.Conc | 5     |
| 25.00 | Pumps      | Pump A B.Conc | 65    |
| 25.01 | Pumps      | Pump A B.Conc | 95    |
| 31.00 | Pumps      | Pump A B.Conc | 95    |
| 31.01 | Pumps      | Pump A B.Conc | 5     |
| 40.00 | Pumps      | Pump A B.Conc | 5     |
| 40.01 | Controller | Stop          |       |

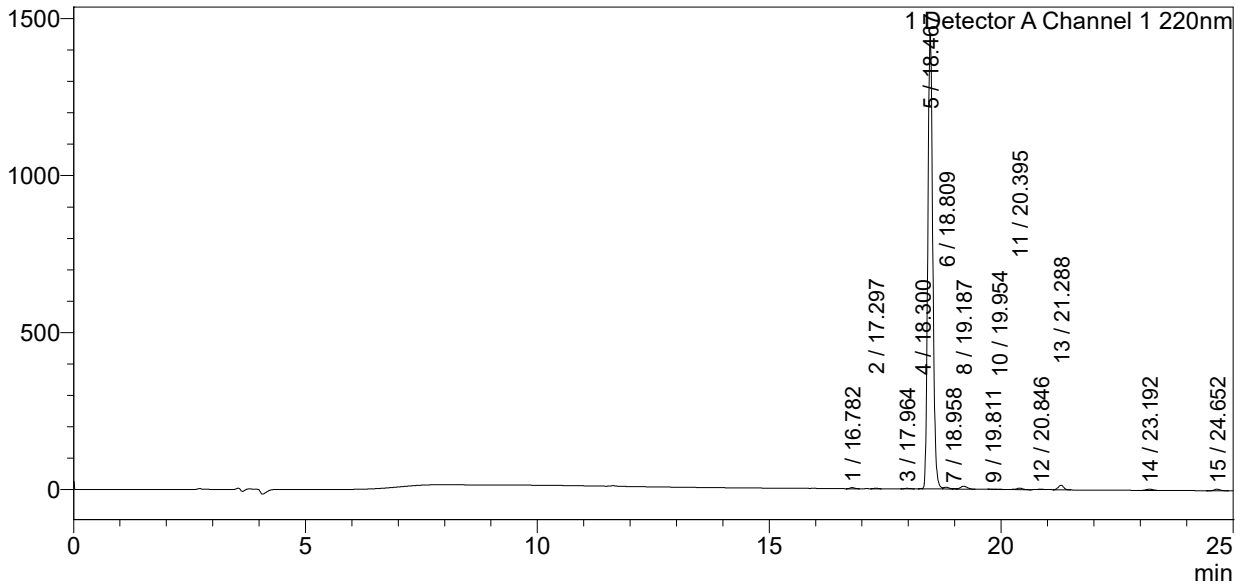
<<Column Performance>>

<Detector A>

Column : Inertsil ODS-3 4.6 x 250 mm  
 Equipment:ZJ19010324

<Chromatogram>

mV



<Peak Table>

Detector A Channel 1 220nm

| Peak# | Ret. Time | Area     | Height  | Area%  |
|-------|-----------|----------|---------|--------|
| 1     | 16.782    | 23449    | 3595    | 0.209  |
| 2     | 17.297    | 10053    | 1725    | 0.090  |
| 3     | 17.964    | 14813    | 1795    | 0.132  |
| 4     | 18.300    | 4082     | 1093    | 0.036  |
| 5     | 18.467    | 10747718 | 1451419 | 95.831 |
| 6     | 18.809    | 46848    | 5714    | 0.418  |
| 7     | 18.958    | 7287     | 1303    | 0.065  |
| 8     | 19.187    | 92153    | 9088    | 0.822  |
| 9     | 19.811    | 6703     | 1125    | 0.060  |
| 10    | 19.954    | 8638     | 1377    | 0.077  |
| 11    | 20.395    | 43224    | 4873    | 0.385  |
| 12    | 20.846    | 10182    | 1266    | 0.091  |
| 13    | 21.288    | 117628   | 14638   | 1.049  |
| 14    | 23.192    | 40584    | 3993    | 0.362  |
| 15    | 24.652    | 41897    | 4925    | 0.374  |

| Peak# | Ret. Time | Area     | Height  | Area%   |
|-------|-----------|----------|---------|---------|
| Total |           | 11215257 | 1507930 | 100.000 |