

## CERTIFICATE OF ANALYSIS

### Product Information

---

Product Name	1321N1/P2Y11
Cat. No.	M00298
Lot No.	B80021711
Host Cell:	1321N1
Target Gene:	P2Y11
Quantity:	2 vials of frozen cells, > 1x10 <sup>6</sup> cells/vial
Shipping Condition:	Dry Ice
Recommended Storage Condition:	Liquid Nitrogen

---

### Stable Cell Line Information

**Recommended Cell Culture Medium:** DMEM + 10% FBS + 250 µg/ml G418

**Freeze Medium:** 45% Culture Medium, 45%FBS, 10% (V/V) DMSO

**Application:** Functional assay for P2Y11

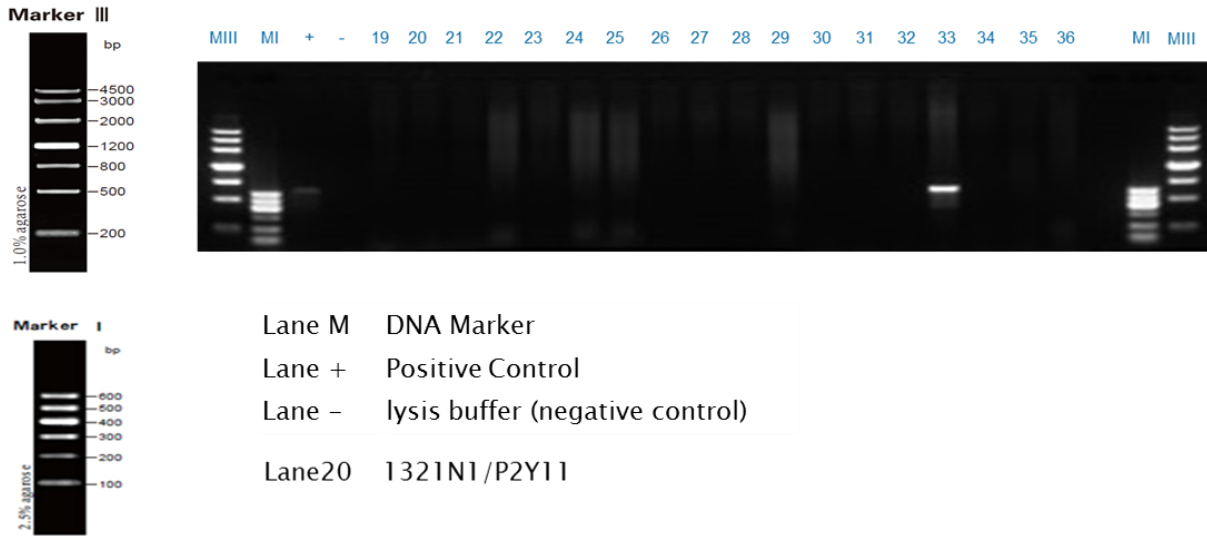
---

Test Item	Specification	Result
Mycoplasma 160	Negative.	Negative., Appendix 1
Functional assay	Calcium flux	EC <sub>50</sub> = 285 nM

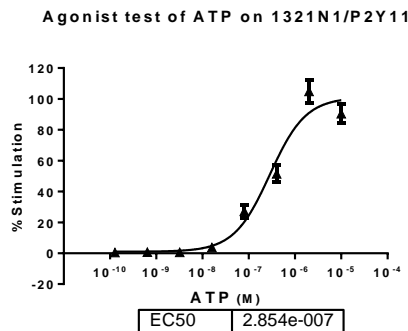
---

## Appendix

### Appendix 1: Mycoplasma 160



### Appendix 2 : Calcium assay



**Figure 1.** ATP-induced concentration-dependent stimulation of intracellular calcium mobilization in 1321N1/P2Y11 cells. The cells were loaded with Calcium-4 prior to stimulation with a P2Y11 receptor agonist, ATP. The intracellular calcium change was measured by FLIPR. The relative fluorescent units (RFU) were plotted against the log of the cumulative doses (5-fold dilution) of ATP (Mean  $\pm$  SD, n = 3). The EC50 of ATP on P2Y11 in 1321N1 cells was 285 nM. The S/B of ATP on P2Y11 in 1321N1 cells was 15.5.

### Caution

For research use only. Not intended for household use. If you have any questions about the Certificate of Analysis, please contact our customer service representative at 1-877-436-7274 (Toll-Free), or 1-732-885-9188.

Certified by:  Date: 11/02/2017  
 Department of Biologics Development Director

860 Centennial Ave., Piscataway, NJ 08854, USA